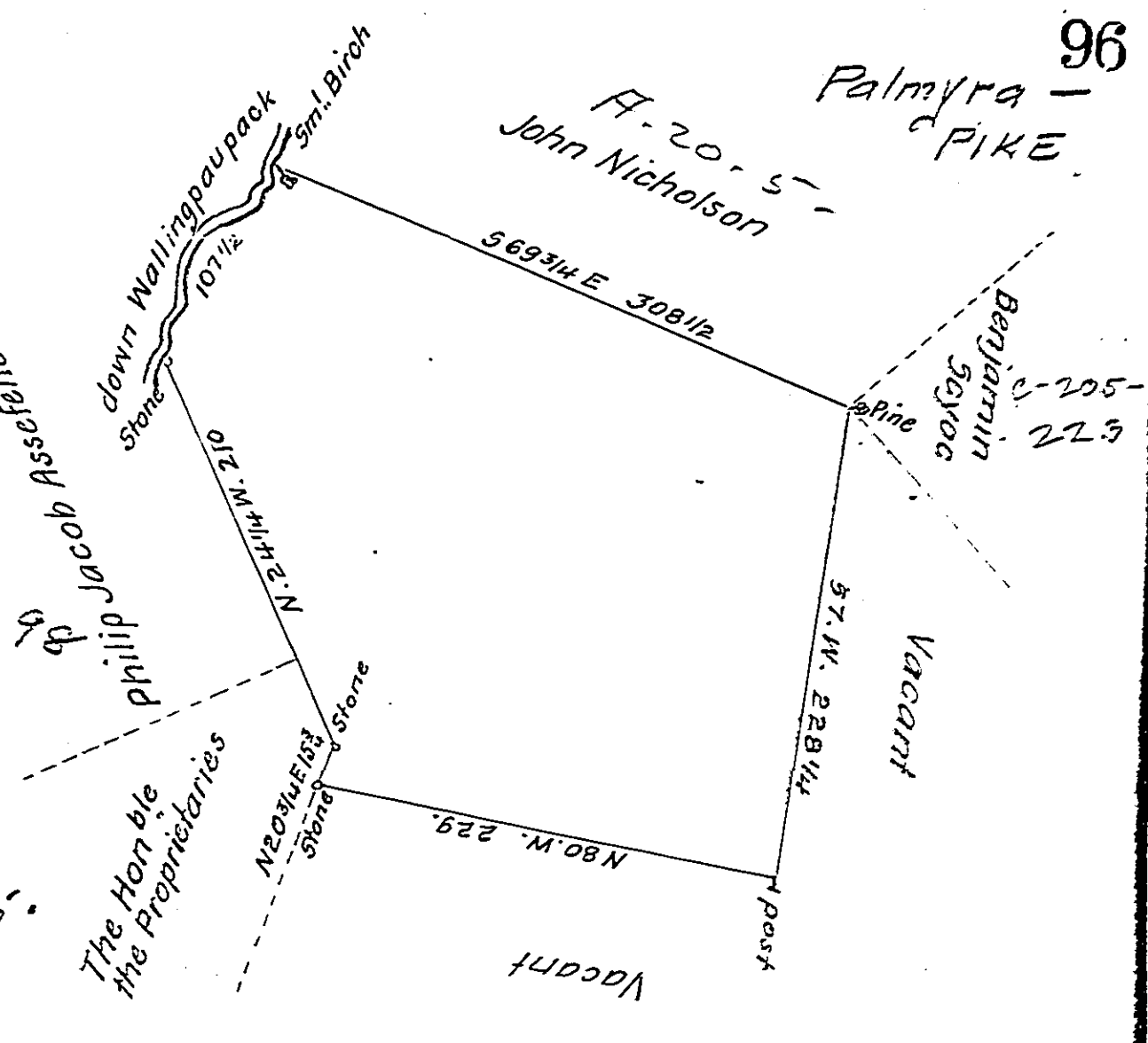


Bearing &
distance down
Wallingpaupack

- 1 N. 24 E... 4
 - 2 N. 5 E... 44
 - 3 N. 40 E... 10
 - 4 N. 80 E... 11 1/2
 - 5 N. E. 20
 - 6 N 24 E... 18
-
- 107 1/2

Philip Jacob Assesfeller
Pg. 99

B. 14. 165°



By Virtue of a Warrant dated the 2^d May 1792 Surveyed the
4 June 1792 to Joshua Seely the above described tract of land Situate
on the South Side of Wallingpaupack Creek about half a mile below the
falls in the County of Northampton Containing four hundred and thirty
Seven Acres and the Allowance of Six 7/8 Cent &c^a.

Daniel Brodhead Esq^r }
Survey^r General. }

Geo. Palmer D.S.

IN TESTIMONY that the above is a copy of the original remaining on file in
the Department of Internal Affairs of Pennsylvania, made
conformably to an Act of Assembly approved the 16th day of
February, 1833, I have hereunto set my Hand and caused
the Seal of said Department to be affixed at Harrisburg,
this twelfth day of November 1906

George A. ...
Secretary of Internal Affairs.